

DATE: 10-16-02

REVISIONS:
PROGRESS 10-16-02
BUILD 10-31-02
PROGRESS 12-20-02
BUILD 12-27-02
REVISED 1-23-03

TODD KNUTSON DESIGN
530 N. 3RD. ST. SUITE 530
MINNEAPOLIS, MN. 55401
612-332-8000

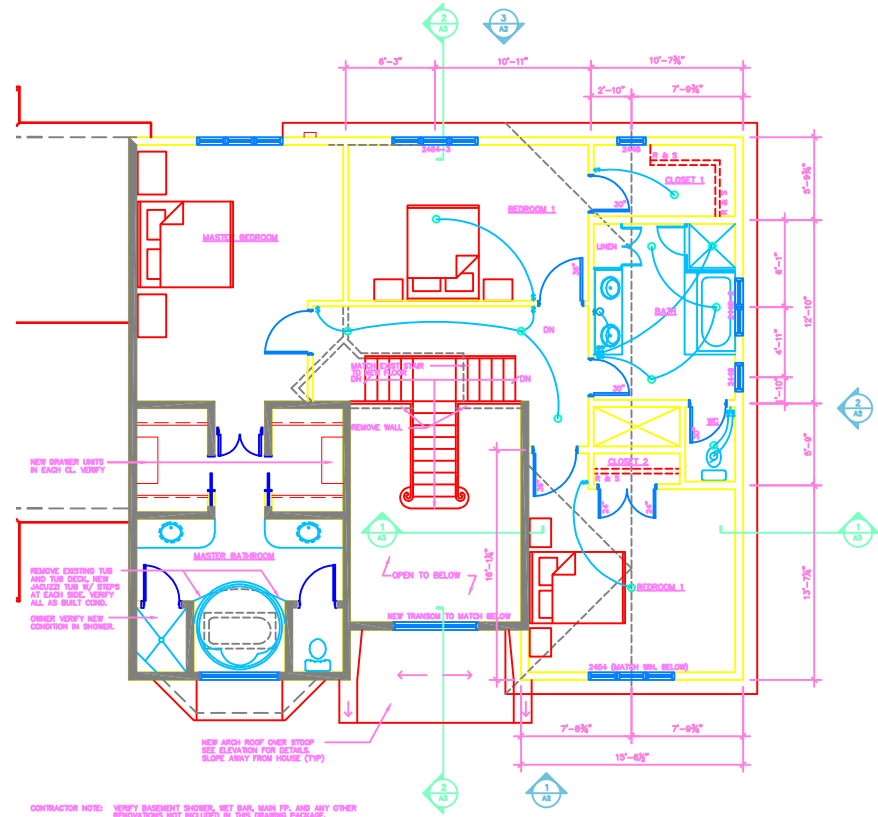
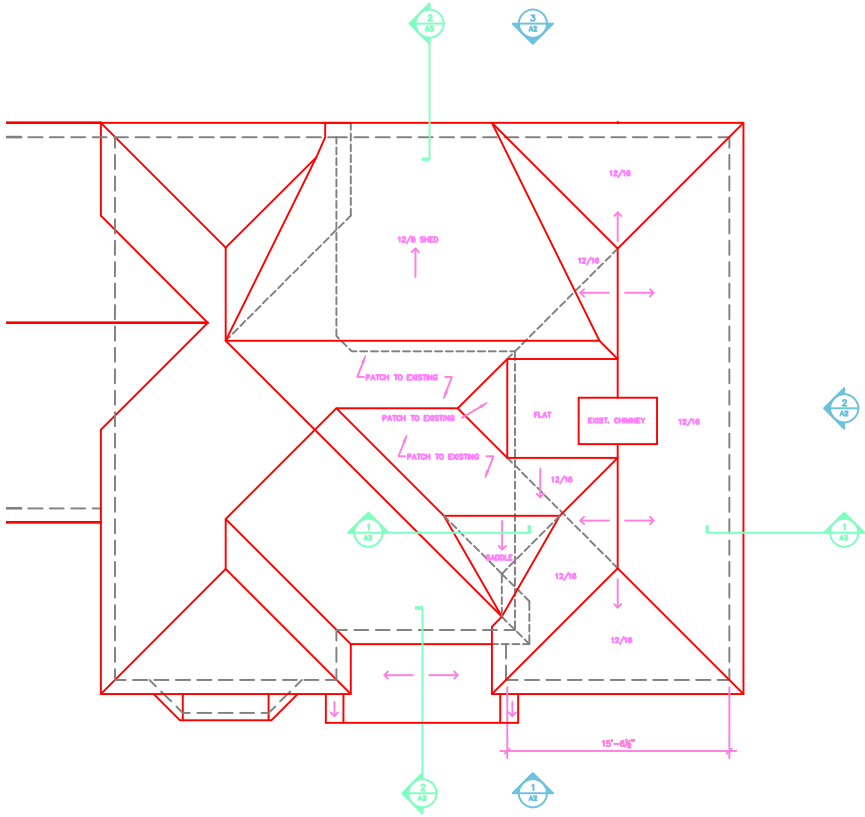
FUNG REMODELING
28050 BOULDER BRIDGE DRIVE
SHOREWOOD, MINNESOTA

JOB NO. 28050

SHEET NO.

A1

OF SHEETS



CONTRACTOR NOTE: VERIFY BASEMENT SHOWERS, WET BATH, MAIN FP, AND ANY OTHER RENOVATIONS NOT INCLUDED IN THIS DRAWING PACKAGE.

2
A

ROOF PLAN

SCALE: 1/4" = 1'-0"

1
A

PROPOSED UPPER FLOOR PLAN AND ELECTRICAL

SCALE: 1/4" = 1'-0"

DATE: 10-16-02
REVISIONS:

PROGRESS 10-16-02
REVISED 10-31-02
REVISED 1-2-03
REVISED 1-23-03

TODD KNUTSON DESIGN
530 N. 3RD. ST. SUITE 530
MINNEAPOLIS, MN. 55401
612-332-8000

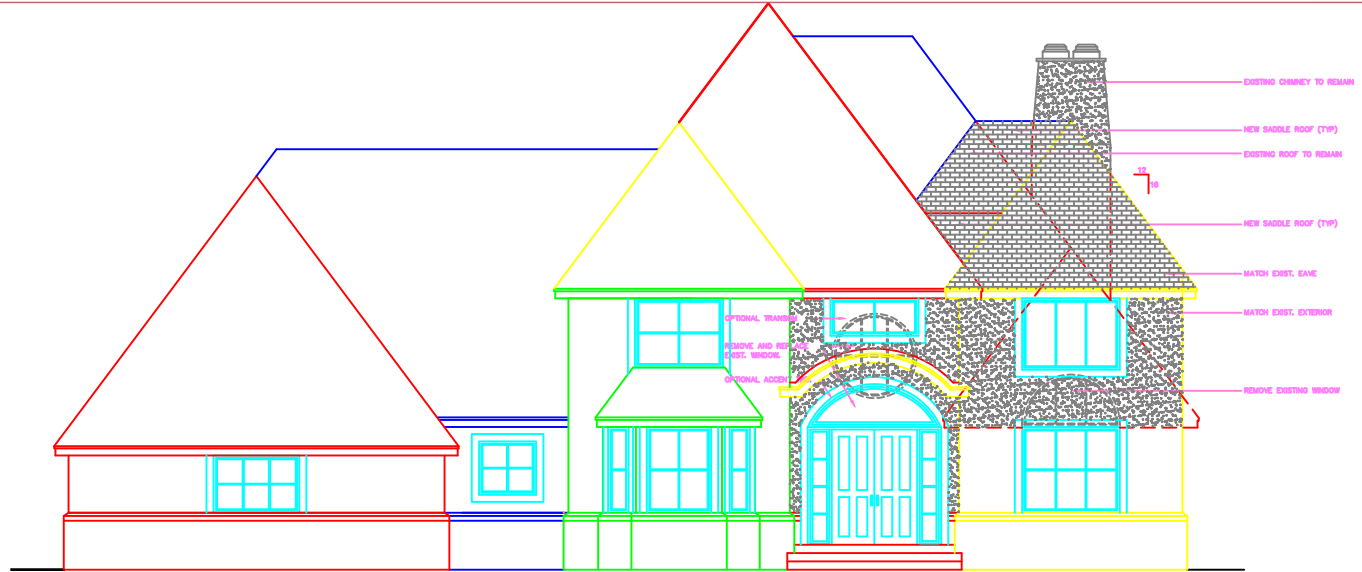
FUNG REMODELING
28050 BOULDER BRIDGE DRIVE
SHOREWOOD, MINNESOTA

JOB NO. 28050

SHEET NO.

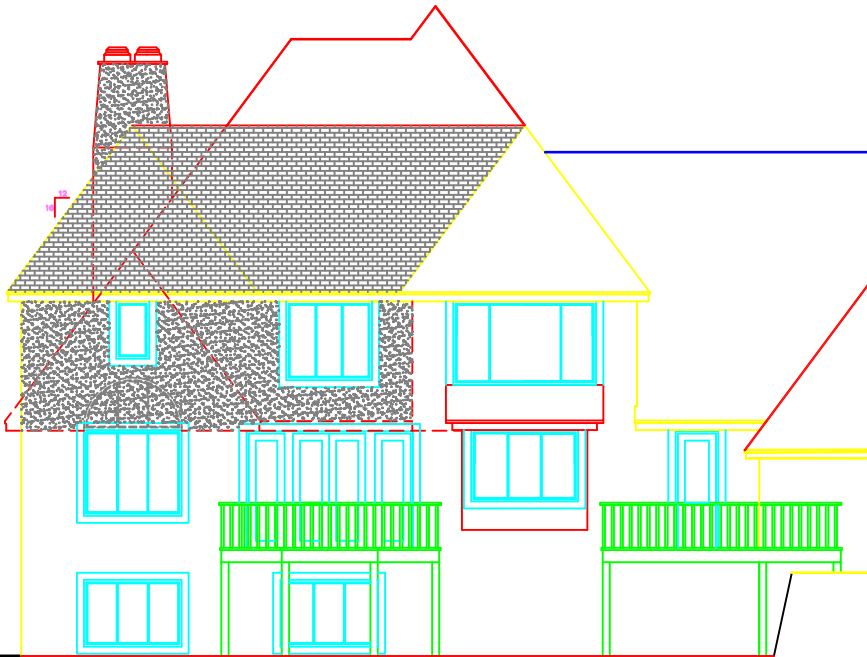
A2

OF SHEETS



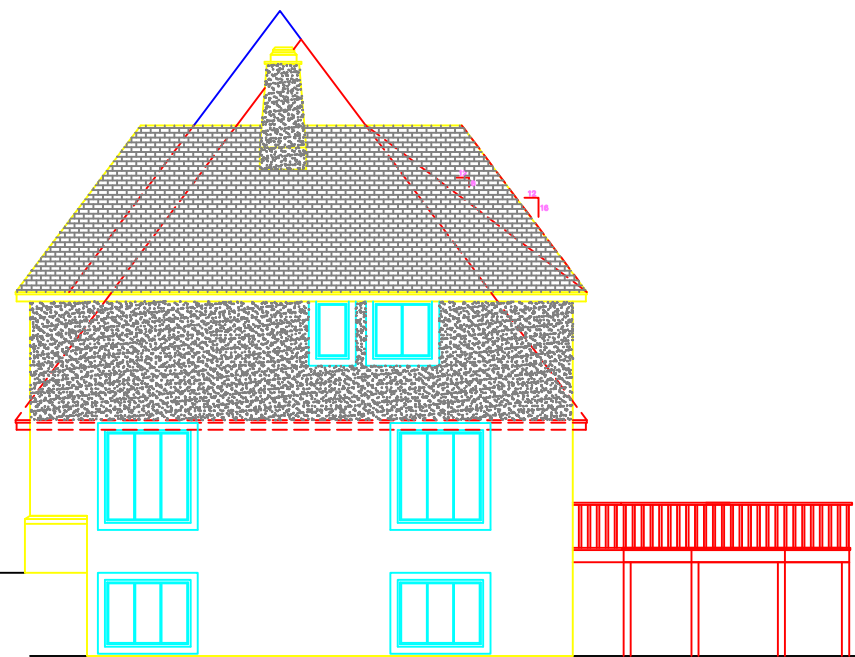
1 PROPOSED UPPER FLOOR PLAN AND ELECTRICAL

SCALE: 1/4" = 1'-0"



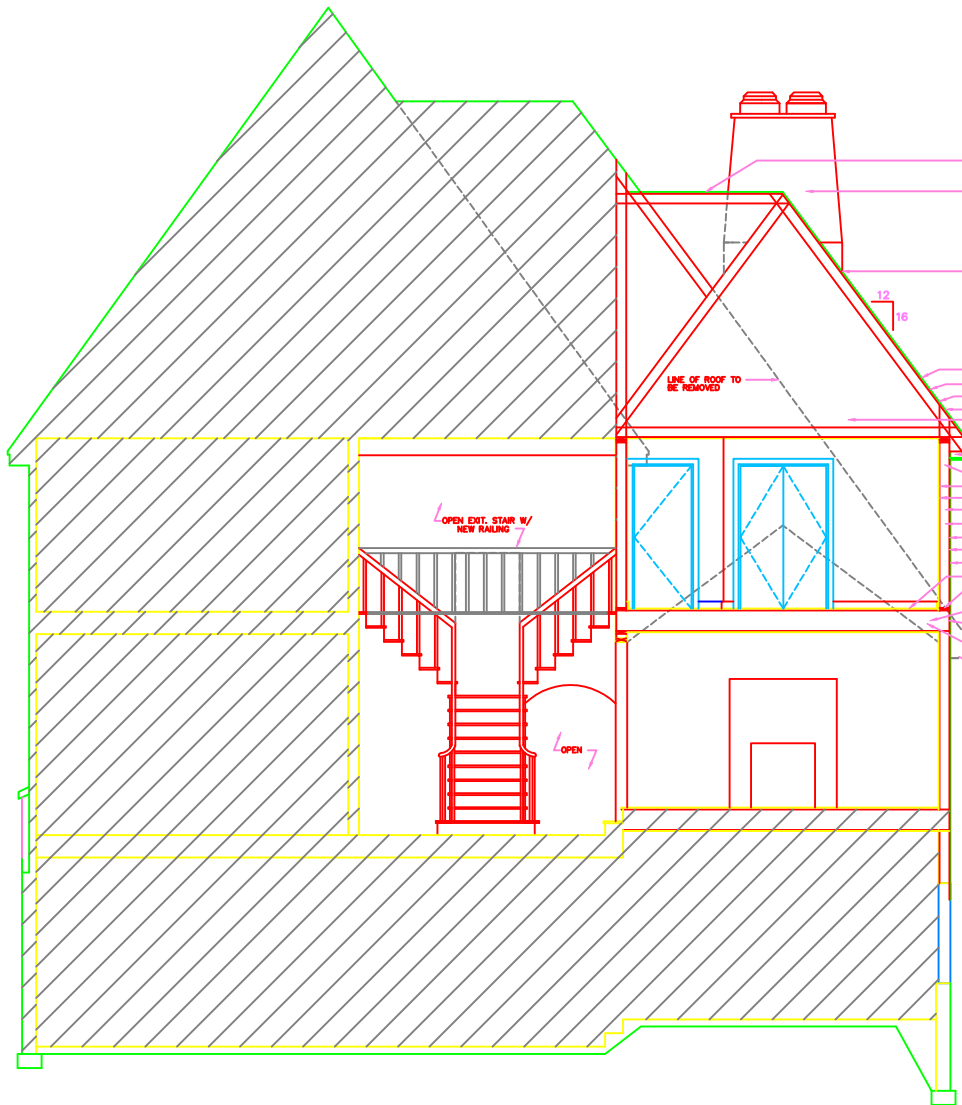
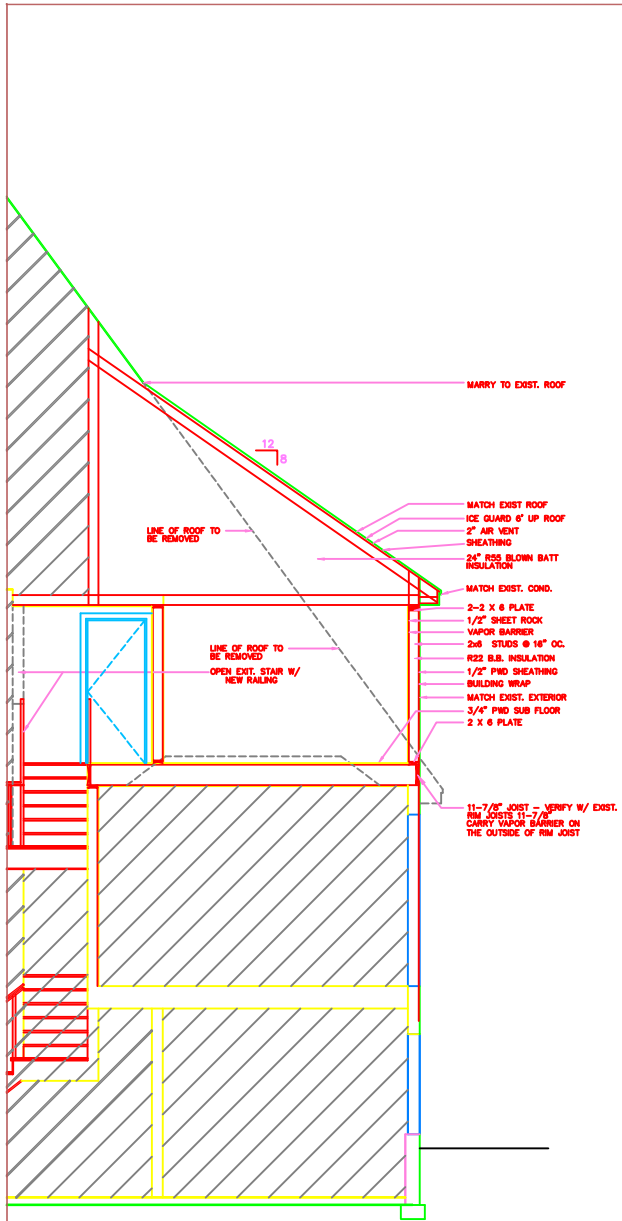
3 PROPOSED UPPER FLOOR PLAN AND ELECTRICAL

SCALE: 1/4" = 1'-0"



2 PROPOSED UPPER FLOOR PLAN AND ELECTRICAL

SCALE: 1/4" = 1'-0"



- FLAT ROOF EVEN WITH NEW RIDGE. SEE ROOF PLAN
- EXIST. CHIMNEY TO REMAIN
- FLASHING AS REQ.
- MATCH EXIST. ROOF
- ICE GUARD 6" UP ROOF
- 2" AIR VENT SHEATHING
- 24" R55 BLOWN BATT INSULATION
- MATCH EXIST. COND.
- 2-2 X 6 PLATE
- 1/2" SHEET ROCK
- VAPOR BARRIER
- 2x6 STUDS @ 16" OC.
- R22 R.B. INSULATION
- 1/2" PWD SHEATHING
- BUILDING WRAP
- MATCH EXIST. EXTERIOR
- 3/4" PWD SUB FLOOR
- 2 X 6 PLATE
- MATCH EXIST. ROOF
- ICE GUARD 6" UP ROOF
- 2" AIR VENT SHEATHING
- 24" R55 BLOWN BATT INSULATION
- MATCH EXISTING
- 2 X 4 OUTRIGGER
- 2-2 X 6 PLATE
- 1/2" SHEET ROCK
- VAPOR BARRIER
- 2x6 STUDS @ 16" OC.
- R22 R.B. INSULATION
- 1/2" PWD SHEATHING
- BUILDING WRAP
- MATCH EXIST. EXTERIOR
- 3/4" PWD SUB FLOOR
- 2 X 6 PLATE
- 11-7/8" JOIST - VERIFY W/ EXIST.
- RIM JOISTS 11-7/8" CARRY VAPOR BARRIER ON THE OUTSIDE OF RIM JOIST
- REMOVE EXISTING ROOF AND CEILING TO TOP PLATE - PREP. FOR NEW FLOOR JOIST AS REQUIRED

DATE: 10-16-02
 REVISIONS:
 PROGRESS 10-16-02
 ISSUE 10-31-02
 REVISED 11-21-02
 REVISED 12-13-02

TODD KNUTSON DESIGN
 530 N. 3RD. ST. SUITE 530
 MINNEAPOLIS, MN. 55401
 612-332-8000

FUNG REMODELING
 28050 BOULDER BRIDGE DRIVE
 SHOREWOOD, MINNESOTA

JOB NO. 28050

SHEET NO.

A3

OF SHEETS

2 BUILDING SECTION

SCALE: 3/8" = 1'-0"

1 PROPOSED UPPER FLOOR PLAN AND ELECTRICAL

SCALE: 3/8" = 1'-0"

SECTION 1 - GENERAL REQUIREMENTS

SECTION 101 - GENERAL CONDITIONS
1. GENERAL CONDITIONS
2. SEALS
3. COORDINATION
4. PROTECTION
5. CLEANING
6. DEMONSTRATION
7. PROTECTION
8. CLEANING
9. DEMONSTRATION

SECTION 102 - ROOFING
1. GENERAL CONDITIONS
2. ROOFING
3. FLASHING
4. DRAINAGE
5. VENTING
6. ACCESSORIES

SECTION 103 - EXTERIOR WALLS
1. GENERAL CONDITIONS
2. EXTERIOR WALLS
3. FINISHES
4. ACCESSORIES

SECTION 104 - INTERIORS
1. GENERAL CONDITIONS
2. INTERIORS
3. FINISHES
4. ACCESSORIES

SECTION 105 - MECHANICAL
1. GENERAL CONDITIONS
2. MECHANICAL
3. ELECTRICAL
4. PIPING

SECTION 106 - ELECTRICAL
1. GENERAL CONDITIONS
2. ELECTRICAL
3. PIPING

SECTION 107 - PLUMBING
1. GENERAL CONDITIONS
2. PLUMBING
3. PIPING

SECTION 108 - ROUGH CARPENTRY
1. GENERAL CONDITIONS
2. ROUGH CARPENTRY
3. FINISHES
4. ACCESSORIES

SECTION 109 - FINISH CARPENTRY
1. GENERAL CONDITIONS
2. FINISH CARPENTRY
3. FINISHES
4. ACCESSORIES

SECTION 110 - MILLWORK
1. GENERAL CONDITIONS
2. MILLWORK
3. FINISHES
4. ACCESSORIES

SECTION 111 - PAINTS
1. GENERAL CONDITIONS
2. PAINTS
3. FINISHES
4. ACCESSORIES

SECTION 112 - STONE
1. GENERAL CONDITIONS
2. STONE
3. FINISHES
4. ACCESSORIES

SECTION 113 - METALS
1. GENERAL CONDITIONS
2. METALS
3. FINISHES
4. ACCESSORIES

SECTION 114 - STRUCTURAL STEEL
1. GENERAL CONDITIONS
2. STRUCTURAL STEEL
3. FINISHES
4. ACCESSORIES

SECTION 115 - ROUGH CARPENTRY
1. GENERAL CONDITIONS
2. ROUGH CARPENTRY
3. FINISHES
4. ACCESSORIES

SECTION 116 - FINISH CARPENTRY
1. GENERAL CONDITIONS
2. FINISH CARPENTRY
3. FINISHES
4. ACCESSORIES

SECTION 117 - MILLWORK
1. GENERAL CONDITIONS
2. MILLWORK
3. FINISHES
4. ACCESSORIES

SECTION 118 - PAINTS
1. GENERAL CONDITIONS
2. PAINTS
3. FINISHES
4. ACCESSORIES

SECTION 119 - STONE
1. GENERAL CONDITIONS
2. STONE
3. FINISHES
4. ACCESSORIES

SECTION 120 - METALS
1. GENERAL CONDITIONS
2. METALS
3. FINISHES
4. ACCESSORIES

SECTION 121 - STRUCTURAL STEEL
1. GENERAL CONDITIONS
2. STRUCTURAL STEEL
3. FINISHES
4. ACCESSORIES

SECTION 122 - ROUGH CARPENTRY
1. GENERAL CONDITIONS
2. ROUGH CARPENTRY
3. FINISHES
4. ACCESSORIES

SECTION 123 - FINISH CARPENTRY
1. GENERAL CONDITIONS
2. FINISH CARPENTRY
3. FINISHES
4. ACCESSORIES

SECTION 124 - MILLWORK
1. GENERAL CONDITIONS
2. MILLWORK
3. FINISHES
4. ACCESSORIES

SECTION 125 - PAINTS
1. GENERAL CONDITIONS
2. PAINTS
3. FINISHES
4. ACCESSORIES

SECTION 126 - STONE
1. GENERAL CONDITIONS
2. STONE
3. FINISHES
4. ACCESSORIES

SECTION 127 - METALS
1. GENERAL CONDITIONS
2. METALS
3. FINISHES
4. ACCESSORIES

SECTION 128 - STRUCTURAL STEEL
1. GENERAL CONDITIONS
2. STRUCTURAL STEEL
3. FINISHES
4. ACCESSORIES

SECTION 129 - ROUGH CARPENTRY
1. GENERAL CONDITIONS
2. ROUGH CARPENTRY
3. FINISHES
4. ACCESSORIES

SECTION 130 - FINISH CARPENTRY
1. GENERAL CONDITIONS
2. FINISH CARPENTRY
3. FINISHES
4. ACCESSORIES

SECTION 131 - MILLWORK
1. GENERAL CONDITIONS
2. MILLWORK
3. FINISHES
4. ACCESSORIES

SECTION 132 - PAINTS
1. GENERAL CONDITIONS
2. PAINTS
3. FINISHES
4. ACCESSORIES

SECTION 133 - STONE
1. GENERAL CONDITIONS
2. STONE
3. FINISHES
4. ACCESSORIES

SECTION 134 - METALS
1. GENERAL CONDITIONS
2. METALS
3. FINISHES
4. ACCESSORIES

SECTION 135 - STRUCTURAL STEEL
1. GENERAL CONDITIONS
2. STRUCTURAL STEEL
3. FINISHES
4. ACCESSORIES

SECTION 136 - MECHANICAL
1. GENERAL CONDITIONS
2. MECHANICAL
3. ELECTRICAL
4. PIPING

SECTION 137 - ELECTRICAL
1. GENERAL CONDITIONS
2. ELECTRICAL
3. PIPING

SECTION 138 - PLUMBING
1. GENERAL CONDITIONS
2. PLUMBING
3. PIPING

SECTION 139 - ROUGH CARPENTRY
1. GENERAL CONDITIONS
2. ROUGH CARPENTRY
3. FINISHES
4. ACCESSORIES

SECTION 140 - FINISH CARPENTRY
1. GENERAL CONDITIONS
2. FINISH CARPENTRY
3. FINISHES
4. ACCESSORIES

SECTION 141 - MILLWORK
1. GENERAL CONDITIONS
2. MILLWORK
3. FINISHES
4. ACCESSORIES

SECTION 142 - PAINTS
1. GENERAL CONDITIONS
2. PAINTS
3. FINISHES
4. ACCESSORIES

DATE: 10-16-02
REVISIONS:

REVISIONS:
1. CORRECTED
2. CORRECTED
3. CORRECTED

TODD KNUTSON DESIGN
530 N. 3RD. ST. SUITE 530
MINNEAPOLIS, MN. 55401
612-332-8000

HANK AND MARY CARDELLO
28050 BOULDER BRIDGE DRIVE
SHOREWOOD, MINNESOTA

JOB NO. 28050

SHEET NO.
A4

OF SHEETS